

*This file provided by*

# INFINITY

d a t a c o r p

Switch to Infinity Data Corp for your processing needs! Infinity offers great rates, excellent customer support and a wide range of payment processing solutions.

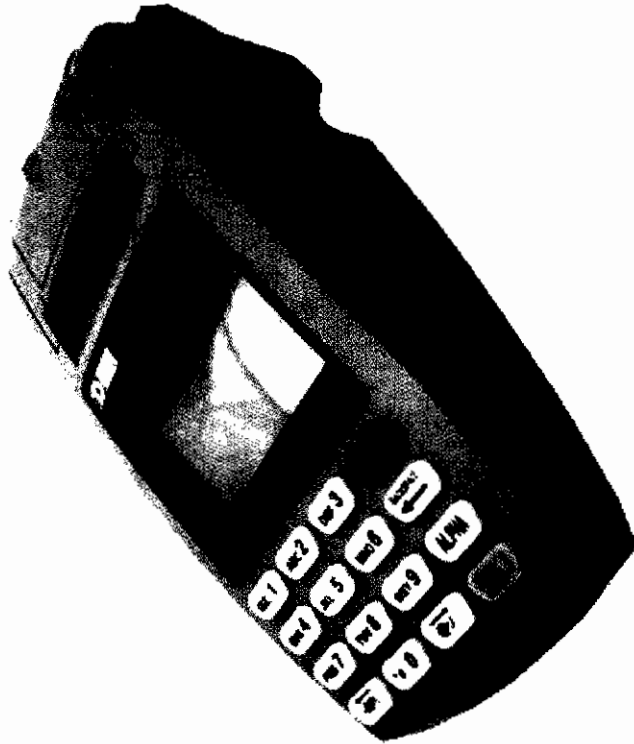
<http://www.infinitydata.com/>

Call Today!  
Sales 1 800 393 6665

# FIRST DATA CORPORATION

## FD-50

### INSTALLATION GUIDE



## 1. INSTALLING THE CABLES

Find the power input on the right side of the terminal. Connect the plug from the power adapter into the power input (Figure 1). Thread the cord through its designated channel (Figure 2). Plug the power adapter into a 120-volt electrical outlet or into a surge suppressor (recommended) after the power cord is connected to the power adapter.



Figure 1



Figure 2

Connect one end of the phone cord into one of the jacks on the back of the terminal (Figure 3). Plug the other end of the cord into a modular wall jack (Figure 4). Use only a jack for an *analog* line like a fax line or a standard telephone.



Figure 3



Figure 4

**Caution:** Risk of explosion if the battery is replaced by an incorrect type. Please dispose of used battery according to the instructions.



Figure 5

(Optional) This terminal supports two USB Host ports (Figure 5).

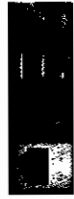


Figure 6

(Optional) This terminal supports one RS-232 ports of RJ-12 offset keyed connector. If the terminal uses a peripheral device with this type of connector and interface, plug it into the RS-232 port on the back of the terminal (Figure 6).



Figure 7

(Optional) If the terminal needs communication over Ethernet, plug cable into the RJ-45 port on the back of the terminal (Figure 7).

## 2. LOADING THE PAPER

Gently pop the printer cover's latch to open the cover (Figure 8); then lift the cover.



Figure 8

Load a roll of thermal paper (Appleton 1012 recommended) into the printer (Figure 9). Load it so that the print-side of the paper will feed out facing the operator.



Figure 9

Close the cover by pressing down evenly on both side tabs, or by pressing on the center of the printer cover.



Figure 10

Use the serrated bar to tear off any excess paper (Figure 10). The printer is now ready to use.

## 3. USING THE CARD READER

With the idle message displayed, select the desired transaction type. Insert the card into the card reader slot, with the magnetic stripe facing down and to the left of the terminal (Figures 11 & 12).



Figure 11

Slide the card in either direction through the slot without stopping. If the card swipe fails, check the position of the magnetic stripe and slide the card again. If the failure persists, the card's stripe may be damaged, requiring you to type the account number on the keypad.



Figure 12

Follow remaining prompts on the display to complete the transaction. See your quick reference guide or user's manual for details.

## 4. USING THE KEYPAD

The keypad allows you to select transaction types and enter information. Its 16 keys can be used to select numbers, letters, and to enter data (Figure 13).

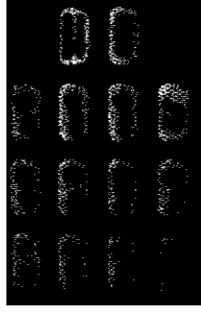


Figure 13

To enter numbers or letters, simply press the appropriate key. For example, to type the letter A, press [ALPHA], then [A] (the Void key) (Figure 14). For more information about entering data, see user's manual.



Figure 14

First Data Corporation  
[www.firstdata.com](http://www.firstdata.com)  
Phone: (303) 488-8000  
Toll Free: (800) 735-3362